

FEATURES & BENEFITS

- ☒ terminal with connection palm perpendicular to the tubular part crimped on the wire
- ☒ solution for special applications
- ☒ soldered seam of the tubular part

LOGISTIC DATA

Quantity in package [pcs] 100

MECHANICAL DATA

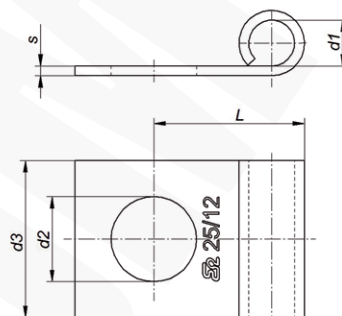
Material Cu
Surface tin-plated

DIMENSIONS

d₃ 20,0

NOTE!

Other versions of the tip type (dimension L) available on request.



Type	Index Ergom	Cross-section [mm²]	Screw hole	d ₁	d ₂	L	s	Weight [kg]
KOF 35/8 (100 PCS)	E09KO-01090104900	35	M8	8,5	8,4	23	1,7	1,62
KOF 35/10 (100 PCS)	E09KO-01090105000		M10		10,5	26		1,65
KOF 50/8 (100 PCS)	E09KO-01090105400	50	M8	10,0	8,4	28	2,0	2,21
KOF 50/10 (100 PCS)	E09KO-01090105600		M10		10,5			2,15